

Information of Packaging Materials Used by NSK Europe Ltd and its Subsidiary Companies
as required under the Italian Legislative Decree No. 116, 2020 (version 2)

NSK is a global manufacturer and supplier of bearings and bearing-related products for the automotive and industrial sectors, as well as steering products for the automotive markets.

NSK supplies only to other professional businesses and as such all transactions are considered to be business to business (B2B) transactions. NSK has a large product portfolio which is sold to a wide range of business users, ranging from OEM's to distributors. As such, the packaging used will vary depending on the type and size of product and whether it is to be delivered straight to an assembly line, to short term stock, or to long term storage (typically aftermarket and distributor use).

Products can be individually wrapped or bulk packed, but in the vast majority of cases, the packaging will take the form of a flexible plastic or paper wrap (to protect one or more product from moisture and dirt ingress), followed by a cartonboard, corrugated board, and wooden box primary box to protect the product and primary wrap and permit easy and safe handling and storage of one or more products.

Dependent on the size of the product, secondary cartons might then be used to consolidate multiple primary boxed products. These secondary cases will generally be of corrugated board designed for manual handling.

Transit packaging, or tertiary packaging, will be used whenever large volumes or weight of product need to be handled and transported. In general this will take the form of a pallet with multiple primary and/or secondary cases strapped onto it, although for exceptionally large and heavy product, bespoke wooden transit cases might be used without the use of a separate pallet.

The information on the following pages details the packaging arrangement used by NSK and the material types for all packaging items that are used to protect transport and sell NSK products. This information is provided to meet the requirements of the Italian Packaging Decree No.113, 2020

If it is believed there is any packaging materials not covered in this file, then please do not hesitate to contact NSK at the following address for clarification

| Size range | Primary Packaging type - first level of packaging containing saleable unit(s) | | Secondary pack type - Containing one of more primary units - typically manually handled | | Tertiary pack types - transit packaging containing one or more primary units and/or one or more secondary packages. Mechanically handled | | | | | | | | | | | | | | | | | | | | |
|---|--|---|---|--|--|--|--|---|---|--|---|----------------------|--------|---|--|---|---|---|--|-----------------------|--------|-----------------------|--------|---------------|--------|
| | Material description | Code | Material description | Code | Material description | Code | | | | | | | | | | | | | | | | | | | |
| Small sized product - Typically <1.5kg mass |  | <table border="1"> <tr><td>plastic film</td><td>LDPE 4 or HDPE 2*</td></tr> <tr><td>fibreboard carton</td><td>PAP 21</td></tr> </table> | plastic film | LDPE 4 or HDPE 2* | fibreboard carton | PAP 21 |  |  | <table border="1"> <tr><td>corrugated spacer</td><td>PAP 20</td></tr> <tr><td>corrugated case</td><td>PAP 20</td></tr> <tr><td>Plastic sealing tape</td><td>PP 5</td></tr> </table> | corrugated spacer | PAP 20 | corrugated case | PAP 20 | Plastic sealing tape | PP 5 |  | <table border="1"> <tr><td>pallet wrap</td><td>LDPE 4</td></tr> <tr><td>wooden pallet</td><td>FOR 50</td></tr> </table> | pallet wrap | LDPE 4 | wooden pallet | FOR 50 | | | | |
| | plastic film | LDPE 4 or HDPE 2* | | | | | | | | | | | | | | | | | | | | | | | |
| | fibreboard carton | PAP 21 | | | | | | | | | | | | | | | | | | | | | | | |
| | corrugated spacer | PAP 20 | | | | | | | | | | | | | | | | | | | | | | | |
| | corrugated case | PAP 20 | | | | | | | | | | | | | | | | | | | | | | | |
| Plastic sealing tape | PP 5 | | | | | | | | | | | | | | | | | | | | | | | | |
| pallet wrap | LDPE 4 | | | | | | | | | | | | | | | | | | | | | | | | |
| wooden pallet | FOR 50 | | | | | | | | | | | | | | | | | | | | | | | | |
| Individually wrapped and boxed bearing -NSK standard bearing (blue box) | | | | | | | | | | | | | | | | | | | | | | | | | |
|  | <table border="1"> <tr><td>Laminated bag (Pa/Pe)</td><td>LDPE 4</td></tr> <tr><td>fibreboard carton</td><td>PAP 21</td></tr> <tr><td>Plastic shrink film</td><td>LDPE 4</td></tr> </table> | Laminated bag (Pa/Pe) | LDPE 4 | fibreboard carton | PAP 21 | Plastic shrink film | LDPE 4 | Individual boxed bearings multi-packed in case with corrugated spacer to stop internal movement |  |  | <table border="1"> <tr><td>plastic Airpack</td><td>LDPE 4</td></tr> <tr><td>corrugated case</td><td>PAP 20</td></tr> <tr><td>Plastic sealing tape</td><td>PP 5</td></tr> </table> | plastic Airpack | LDPE 4 | corrugated case | PAP 20 | Plastic sealing tape | PP 5 |  | <table border="1"> <tr><td>Edge Protectors</td><td>PAP 21</td></tr> <tr><td>Pallet blue Strapping</td><td>PP 5</td></tr> <tr><td>wooden pallet</td><td>FOR 50</td></tr> </table> | Edge Protectors | PAP 21 | Pallet blue Strapping | PP 5 | wooden pallet | FOR 50 |
| Laminated bag (Pa/Pe) | LDPE 4 | | | | | | | | | | | | | | | | | | | | | | | | |
| fibreboard carton | PAP 21 | | | | | | | | | | | | | | | | | | | | | | | | |
| Plastic shrink film | LDPE 4 | | | | | | | | | | | | | | | | | | | | | | | | |
| plastic Airpack | LDPE 4 | | | | | | | | | | | | | | | | | | | | | | | | |
| corrugated case | PAP 20 | | | | | | | | | | | | | | | | | | | | | | | | |
| Plastic sealing tape | PP 5 | | | | | | | | | | | | | | | | | | | | | | | | |
| Edge Protectors | PAP 21 | | | | | | | | | | | | | | | | | | | | | | | | |
| Pallet blue Strapping | PP 5 | | | | | | | | | | | | | | | | | | | | | | | | |
| wooden pallet | FOR 50 | | | | | | | | | | | | | | | | | | | | | | | | |
| Individually wrapped and boxed bearing with outer film seal NSK Precision bearing (Gold box) | | | | | | | | | | | | | | | | | | | | | | | | | |
|  | <table border="1"> <tr><td>Paper wrap</td><td>PAP 22</td></tr> </table> | Paper wrap | PAP 22 | Stack of multiple bearings wrapped in a paper roll |  |  | <table border="1"> <tr><td>corrugated spacer</td><td>PAP 20</td></tr> <tr><td>corrugated case</td><td>PAP 20</td></tr> <tr><td>Plastic sealing tape</td><td>PP 5</td></tr> </table> | corrugated spacer | PAP 20 | corrugated case | PAP 20 | Plastic sealing tape | PP 5 |  | <table border="1"> <tr><td>Edge Protectors</td><td>PAP 21</td></tr> <tr><td>Blue Strapping</td><td>PP5</td></tr> <tr><td>Top Cover</td><td>PAP20</td></tr> <tr><td>Pallet wrap</td><td>LDPE 4</td></tr> </table> | Edge Protectors | PAP 21 | Blue Strapping | PP5 | Top Cover | PAP20 | Pallet wrap | LDPE 4 | | |
| Paper wrap | PAP 22 | | | | | | | | | | | | | | | | | | | | | | | | |
| corrugated spacer | PAP 20 | | | | | | | | | | | | | | | | | | | | | | | | |
| corrugated case | PAP 20 | | | | | | | | | | | | | | | | | | | | | | | | |
| Plastic sealing tape | PP 5 | | | | | | | | | | | | | | | | | | | | | | | | |
| Edge Protectors | PAP 21 | | | | | | | | | | | | | | | | | | | | | | | | |
| Blue Strapping | PP5 | | | | | | | | | | | | | | | | | | | | | | | | |
| Top Cover | PAP20 | | | | | | | | | | | | | | | | | | | | | | | | |
| Pallet wrap | LDPE 4 | | | | | | | | | | | | | | | | | | | | | | | | |
| Stack of multiple bearings wrapped in a paper roll | | | | | | | | | | | | | | | | | | | | | | | | | |
|  | <table border="1"> <tr><td>plastic film</td><td>HDPE 2</td></tr> </table> | plastic film | HDPE 2 | Stack of multiple bearings sealed in a plastic bag |  |  | <table border="1"> <tr><td>plastic liner</td><td>LDPE 4</td></tr> <tr><td>corrugated spacer</td><td>PAP 20</td></tr> <tr><td>corrugated case</td><td>PAP 20</td></tr> <tr><td>Plastic sealing tape</td><td>PP 5</td></tr> </table> | plastic liner | LDPE 4 | corrugated spacer | PAP 20 | corrugated case | PAP 20 | Plastic sealing tape | PP 5 |  | <table border="1"> <tr><td>Plastic Aircap</td><td>HDPE 2</td></tr> </table> | Plastic Aircap | HDPE 2 | | | | | | |
| plastic film | HDPE 2 | | | | | | | | | | | | | | | | | | | | | | | | |
| plastic liner | LDPE 4 | | | | | | | | | | | | | | | | | | | | | | | | |
| corrugated spacer | PAP 20 | | | | | | | | | | | | | | | | | | | | | | | | |
| corrugated case | PAP 20 | | | | | | | | | | | | | | | | | | | | | | | | |
| Plastic sealing tape | PP 5 | | | | | | | | | | | | | | | | | | | | | | | | |
| Plastic Aircap | HDPE 2 | | | | | | | | | | | | | | | | | | | | | | | | |
| Stack of multiple bearings sealed in a plastic bag | | | | | | | | | | | | | | | | | | | | | | | | | |
|  | <table border="1"> <tr><td>plastic tube</td><td>HDPE 2</td></tr> <tr><td>tube end cap</td><td>LDPE 4</td></tr> <tr><td>tape</td><td>PVC 3</td></tr> </table> | plastic tube | HDPE 2 | tube end cap | LDPE 4 | tape | PVC 3 | Stack of multiple bearings sealed in a rigid tube |  |  | <table border="1"> <tr><td>plastic chips</td><td>PS 6</td></tr> <tr><td>plastic chip bag</td><td>LDPE 4</td></tr> <tr><td>corrugated case</td><td>PAP 20</td></tr> <tr><td>corrugated spacer</td><td>PAP 20</td></tr> <tr><td>Brown cellophane tape</td><td>PP 5</td></tr> </table> | plastic chips | PS 6 | plastic chip bag | LDPE 4 | corrugated case | PAP 20 | corrugated spacer | PAP 20 | Brown cellophane tape | PP 5 | | | | |
| plastic tube | HDPE 2 | | | | | | | | | | | | | | | | | | | | | | | | |
| tube end cap | LDPE 4 | | | | | | | | | | | | | | | | | | | | | | | | |
| tape | PVC 3 | | | | | | | | | | | | | | | | | | | | | | | | |
| plastic chips | PS 6 | | | | | | | | | | | | | | | | | | | | | | | | |
| plastic chip bag | LDPE 4 | | | | | | | | | | | | | | | | | | | | | | | | |
| corrugated case | PAP 20 | | | | | | | | | | | | | | | | | | | | | | | | |
| corrugated spacer | PAP 20 | | | | | | | | | | | | | | | | | | | | | | | | |
| Brown cellophane tape | PP 5 | | | | | | | | | | | | | | | | | | | | | | | | |
| Stack of multiple bearings sealed in a rigid tube | | | | | | | | | | | | | | | | | | | | | | | | | |

* LDPE used for EU and UK manufactured bearings, HDPE for non EU-UK origin Products



| | |
|--------------|-------------------|
| plastic film | LDPE 4 or HDPE 2* |
|--------------|-------------------|

Individual bagged bearing (not individually boxed)



| | |
|--------------------|--------|
| plastic case liner | LDPE 4 |
| corrugated case | PAP20 |

Individually bagged bearings multi-packed into plastic-lined shipping case



| | |
|-----------------------|--------|
| Pallet blue Strapping | PP 5 |
| wooden pallet | FOR 50 |

Small sized product - Typically <1.5Kg mass



| | |
|----------------------|--------|
| Plastic wrap | LDPE 4 |
| paper antirust sheet | PAP22 |
| corrugated carton | PAP20 |

Bulk packed bearings (not individually bagged or boxed) in plastic lined case with VCI paper



| | |
|----------------------|--------|
| Plastic wrap | LDPE 4 |
| Plastic infill | PS 6 |
| corrugated carton | PAP20 |
| Plastic sealing tape | PP 5 |

Bulk packed bearings (not individually bagged or boxed) in plastic lined case with expanded polystyrene spacers



| | |
|-----------------------|--------|
| wooden case | FOR 50 |
| wooden pallet | FOR 50 |
| pallet blue strapping | PP 5 |



| | |
|-----------------------|--------|
| wooden case | FOR 50 |
| wooden pallet | FOR 50 |
| pallet blue strapping | PP 5 |

Medium sized product typically 1kg-25Kg



| | |
|------------------------|-------------------|
| Plastic anti-rust film | LDPE 4 or HDPE 2* |
| corrugated carton | PAP20 |
| paper infill | PAP22 |

Bearing individually bagged and boxed, with paper infill



| | |
|-------------------|-------------------|
| Plastic wrap | LDPE 4 or HDPE 2* |
| corrugated carton | PAP20 |

Bearing individually bagged and boxed, no infill



| | |
|-------------------|--------|
| Plastic wrap | LDPE 4 |
| corrugated carton | PAP20 |

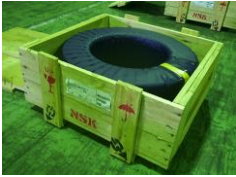
Bearing individually bagged and boxed, no infill

* LDPE used for EU and UK manufactured bearings, HDPE for non EU-UK origin Products

large bearings
typically
>20Kg



| | |
|------------------------------|-------|
| Paper+PE laminated tape wrap | |
| EPS spacers | PS 6 |
| corrugated carton | PAP20 |
| Plastic sealing tape | PP 5 |



| | |
|------------------------------|--------|
| Paper+PE laminated tape wrap | |
| Plastic sealing tape | PP 5 |
| Outer plastic tape wrap | HDPE 2 |
| wooden Box | FOR50 |
| Box black strapping | PET 1 |



